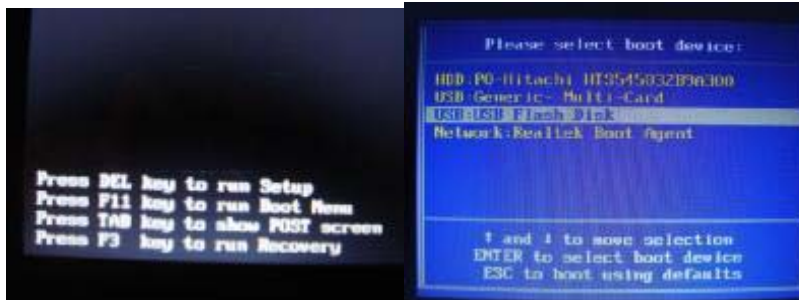


## Restore WD HDD setting with bootable USB flash drive (Pen drive)

**Note:** The utility is only available for WD 640G [S71-2464501-W36] with the manufacturing date 09/2009~10/2009.

1. Extract the zip file to a bootable USB flash drive (Pen drive).
2. Insert the USB flash drive (Pen drive) in the USB port.
3. Boot up the notebook and press F11 key to run Boot menu and then select USB flash disk drive



4. Execute the file "wd2664.exe"



If it is not the date code, the screen shows information below:

"No devices were detected. If hard drives are in the system, then perhaps the controller is not supported. Please contact your Western Digital Representative."

5. Reboot it.

# How to make a bootable flash disk

UNetbootin official website:

<http://unetbootin.sourceforge.net/>

Tools to prepare:

Flash Disk

NB or PC which can connect to the Internet

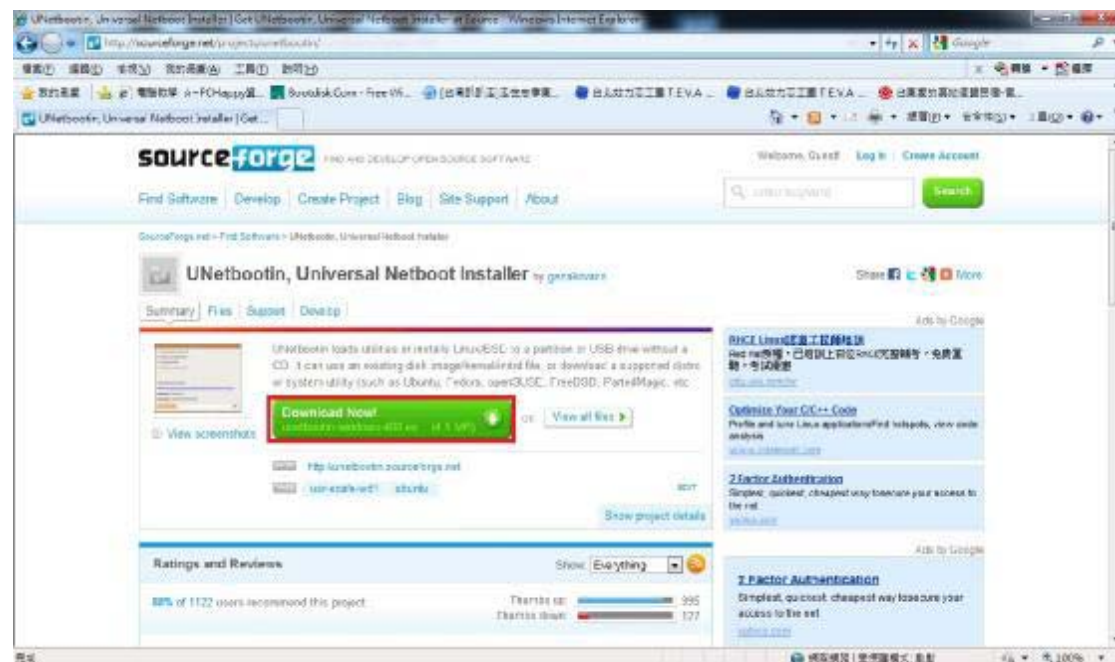
1. Connect the NB with the Internet, and then enter UNetbootin official website. Press  
“Download (for Windows)”



2. Press “UNetbootin, Universal Netboot installer”

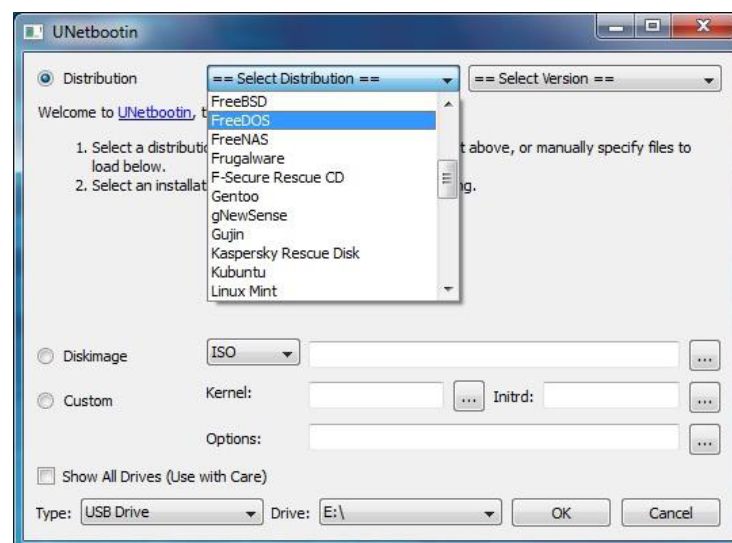


3. Press “Download Now!” , save the file on the desktop of the computer.

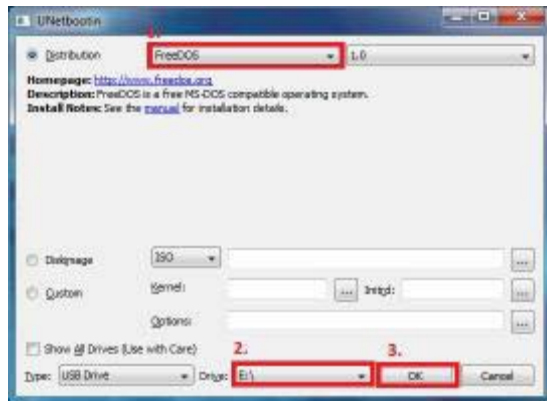


4. Insert the Flash Disk into the NB

5. Exact “UNetbootin-windows-408.exe”



6. For Distribution, select "FreeDOS", and confirm whether the drive corresponds to the USB flash disk. If correct, press "OK" directly.



7. Press "Exit" and then you finish making a bootable flash disk

